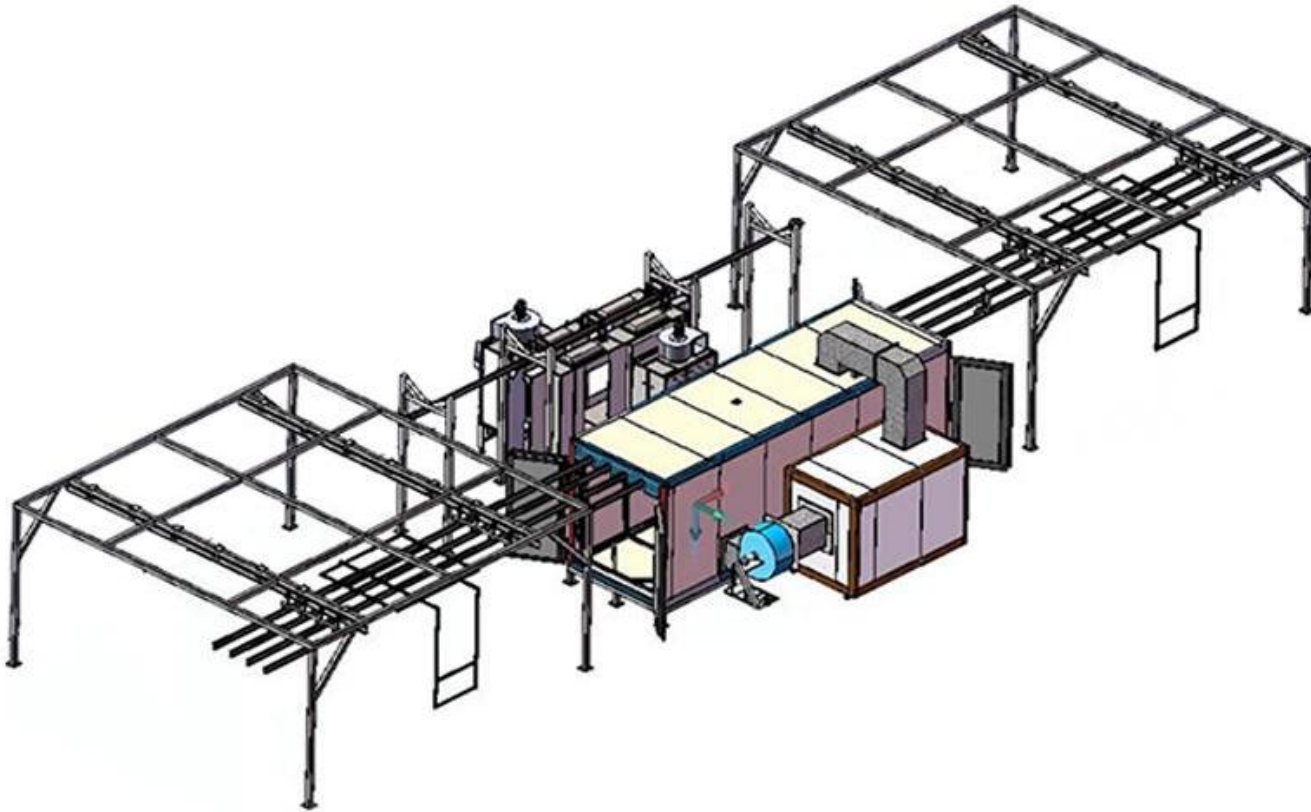


## Manual Powder Coating Line Built in Korea



This manual powder coating line is specially designed for our Korean customer, suitable for batch production of long and heavy workparts, especially for aluminum profile.

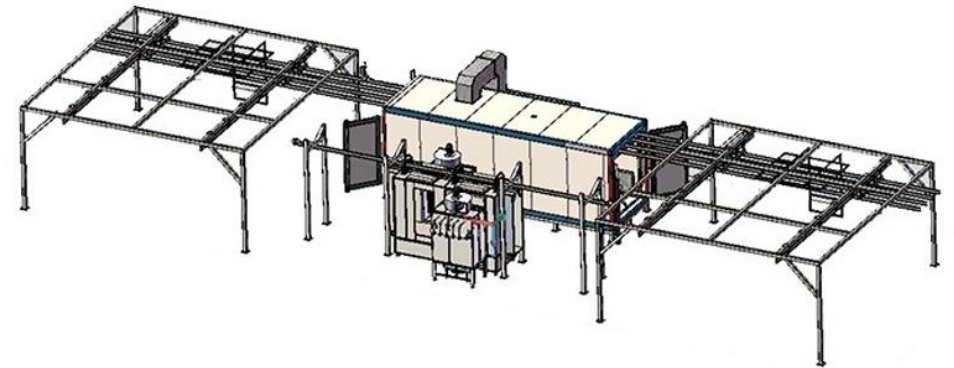
When the powder spraying work is completed, there is no need to unload and load the workpiece, and just manually pull the track system which loaded with sprayed workpieces from spraying station to curing station, greatly saving labor efforts.

## Manual Powder Coating Line Built in Korea



**The complete line includes:**

- ▲ Manual Powder Coating Machine
- ▲ Pass Thru Powder Coating Spray Booth
- ▲ Gas Powder Coating Oven
- ▲ Manually-pull Track System

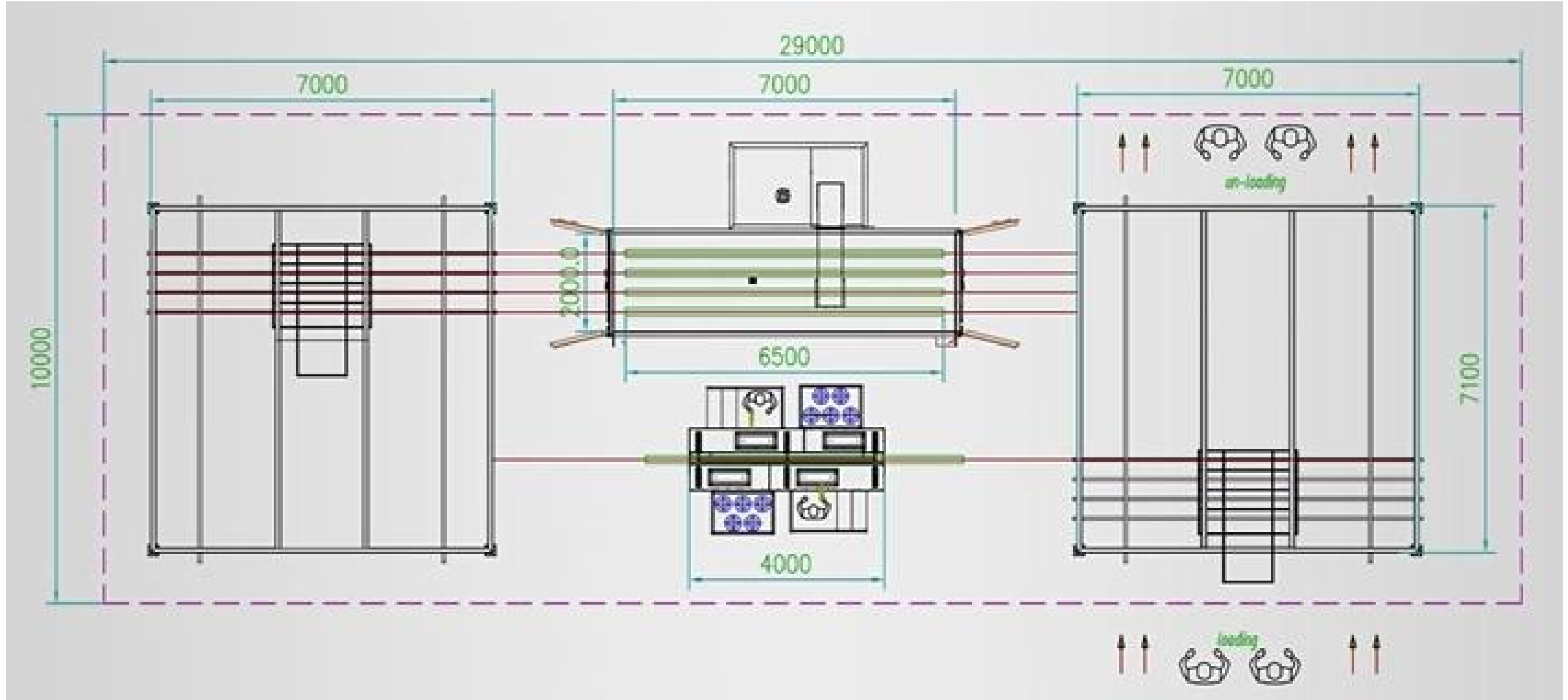


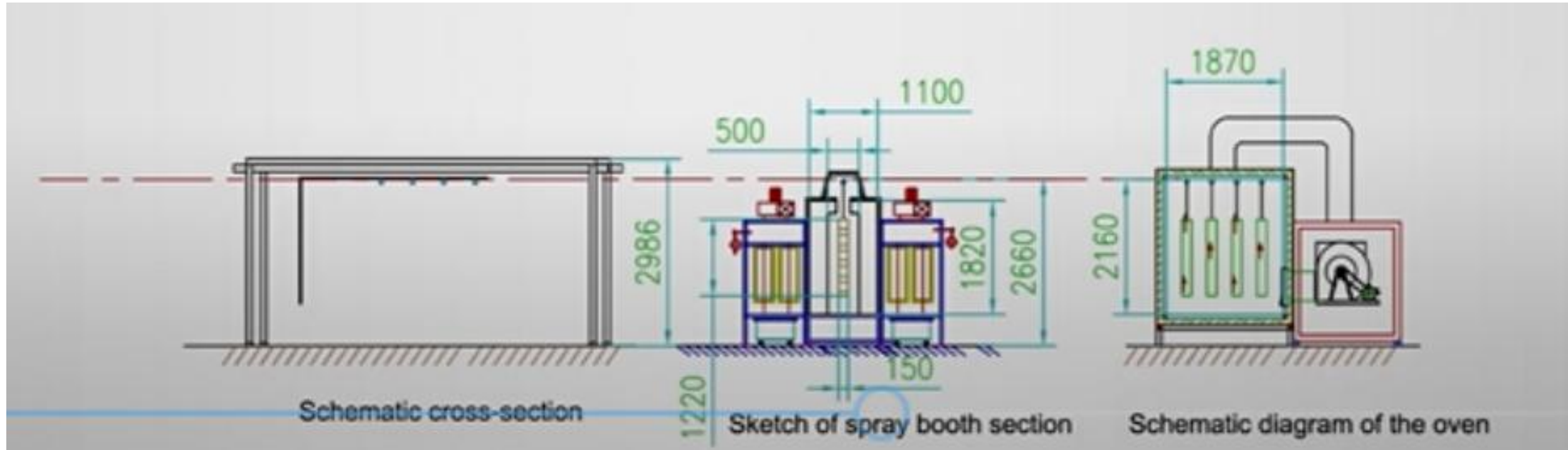


This manual powder coating line is suitable for long, heavy and complex shape workparts which could get high requirement and precise spraying, such as **aluminum profiles**. The manually-pull overhead track system reduces efforts, and requires less budget and space comparing with automatic system.



# Powder Coating Line Drawing







## Part1: COLO-660 Manual Powder Coating Machine

- ▲ 100kv manual spray gun maximizes the charging ability for high transfer efficiency, saving time and powders.
- ▲ 0-100kV adjustable voltage is ideal for powder coating objects with different shapes.
- ▲ One-touch intelligent operation buttons give an quick access to powder coating, including four pre-programmed options for processing different parts, includes: flat parts coating mode, corner coating mode, re-coating mode, pulse coating mode.
- ▲ Configured with 60lbs fluidizing powder hopper, durable and easy to clean.





## Part 2: Pass Thru Powder Coating Booth

Workparts enter the booth from one entrance and exit from the other through overhead tracks. The track system allows them continuously passing through the coating area of the spray booth.

This pass thru powder coating booth has 2 manual working stations for spray guns, thus workparts could obtain powder spraying from both sides, which ensures coating efficiency



## Pass Thru Powder Coating Booth Specifications

- ▲ Inner Size: Length4000 \* Width1100 \* Height1820 mm
- ▲ Open Size: Width500 \* Height1820mm
- ▲ Meterial: SPCC/t=1.5mm, with door
- ▲ Power Supply: 220V/380V, 3Phase, 50-60HZ, customized
- ▲ Bottom Frame: 4#, Square Tube
- ▲ Fan Powder: 4kw, 2 sets, 5000m<sup>3</sup>/h
- ▲ Recovery System: Filter Recovery System
- ▲ Filter Count: 10 pcs, dia325\*900mm





## Part 3: Gas Powder Coating Oven

This manual powder coating oven installed with overhead track system is designed to carry heavy workparts or long length workparts in batches into the oven for continuous production. It is recommended to take gas or diesel as fuels, which features higher heating efficiency and lower energy expense. Our powder coating ovens features environmental friendly, reducing operating cost and curing more parts everyday.



## Gas Powder Coating Oven Specifications

- ▲ Inner Size: Length 7000 \* Width 1870 \* Height 2160 mm
- ▲ Insulation Plate/t=100mm, Hemming SGCC/t=1.5mm
- ▲ Bottom Frame: 10#Square Tube, Inner Frame: 6#Square Tube
- ▲ Heating Source: Gas
- ▲ Gas Bunner: 30000kcal/h, Italy Riello Brand
- ▲ Voltage/Frequency: 380V/220V (50-60Hz), Customized
- ▲ Heating Temperature: Max. 250° C
- ▲ Warm-up Time: 15-30 min. (180° C)
- ▲ Motor Power: 7.5kw, Air Flow 8000m<sup>3</sup>/h, 1 Set